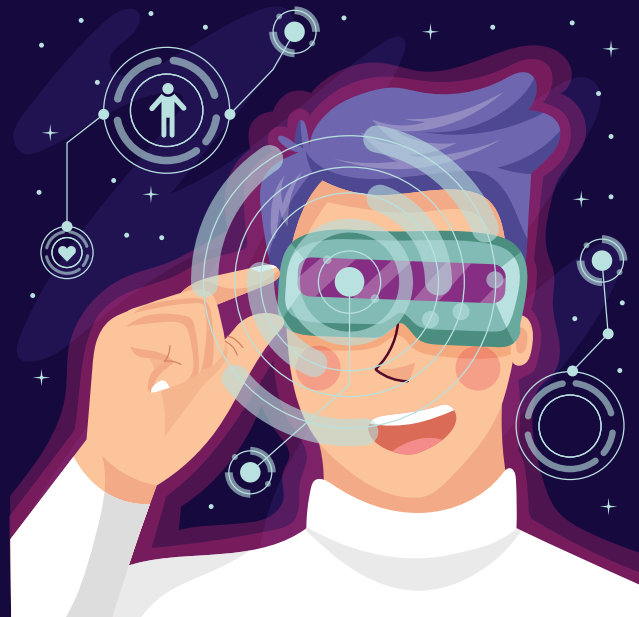


FACING THE FUTURE TOGETHER

November 14-16 2023

ANNUAL MEETING & EXPO

Galt House Hotel, Louisville, KY



KENTUCKY ASSOCIATION OF HEALTH CARE FACILITIES
KENTUCKY CENTER FOR ASSISTED LIVING

WWW.KAHCFKCAL.ORG

PRESENTED BY:



"Large Enough to Serve...Small Enough to Care"



Group Purchasing with Service, Savings, Value, Experience, and Integrity

Ask about food & beverage savings with the HPSI menu programs and other HPSI programs!

[More information available at www.hpsionline.com](http://www.hpsionline.com)



HPSI is proud to be a KAHCF-KCAL supporter for 45+ years and a **Presenting Sponsor and Exhibitor** at the 2023 Convention & Trade Show.

Be sure to stop by HPSI: Booth #11- #12!

TIM COPELAND | Purchasing Consultant | 502-494-5782 | timc@hpsionline.com

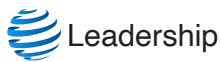
GROUP PURCHASING PROGRAMS | MENU SERVICES | FOOD COST CONTAINMENT

CONVENTION HIGHLIGHTS

KAHCF/KCAL is excited for the 2023 Annual Meeting & Expo! For three fun and educational days, we provide 33 first-class sessions and an expo consisting of over 100 of the best goods and services our profession has to offer. You will stay entertained with our networking events and engage with gadgets and ideas about the future of long term care. The Galt House Hotel in downtown Louisville will be transformed starting November 14 through November 16 as we prepare to face a bright future for our long-term care professionals!

Register Today! Go to Page 13 for details!

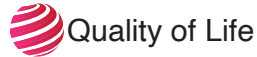
Educational Tracks



Leadership



Clinical



Quality of Life



Marketing/
Communications



Regulatory



KCAL
(only on Wednesday)

Attend the KAHCF Expo!

On November 15, the expo will be open to all registered attendees and lunch will be provided. Meet with over 100 state and national providers to learn about the latest developments to help you provide the highest quality, most cost-effective care possible. The expo will be open to designated decision-makers only on November 14.

Join us at the Pump Up the PAC Party!

Thursday, Nov. 16

DJ Warren Peace will be kicking off the Pump up the PAC Party on Thursday, November 16 following the Awards Banquet. We couldn't think of a better way to celebrate our LTC professionals than a night of dancing and camaraderie with friends and colleagues. This FREE event will feature a silent auction with a variety of items to bid on.



KAHCF-PAC



KEYNOTE SPEAKERS



Tuesday Opening General Session

Facing the Future with Excellence
Presenter: Randy Fox, Author, Coach

FoxPoint Transformational Leadership

Presenting Sponsors: HPSI & Med Care Pharmacy



Wednesday—General Session

In this Together: Becoming a Team of Retention Champions

*Presenter: Shelonda Darling
Workforce Retention Strategist
Magnet Culture*

Champion Sponsors: Cull & Hayden, P.S.C & Kentucky Healthcare Foundation



Thursday—General Session

The Companionship Culture: Resident/Caregiver Engagement through Life Stories

Presenter: Jerald Cosey, BA, HFA, CNA

*Healthcare Speaker
Champion Sponsor: Remedi SeniorCare Pharmacy*

YOU COULD WIN CASH AT THE EXPO!

Each attendee will get a card to track their visits. When this card is returned, it will enter you into a drawing to win cash! The winners will be announced at the Meet & Mingle Party sponsored by Medicare Pharmacy, HPSI, Stites & Harbison, Cull & Hayden, Pharmerica, Synchrony Health Services, Remedi SeniorCare Pharmacy, Dzenitis Newman, and HTS.

THE SCHEDULE

TUESDAY—NOVEMBER 14

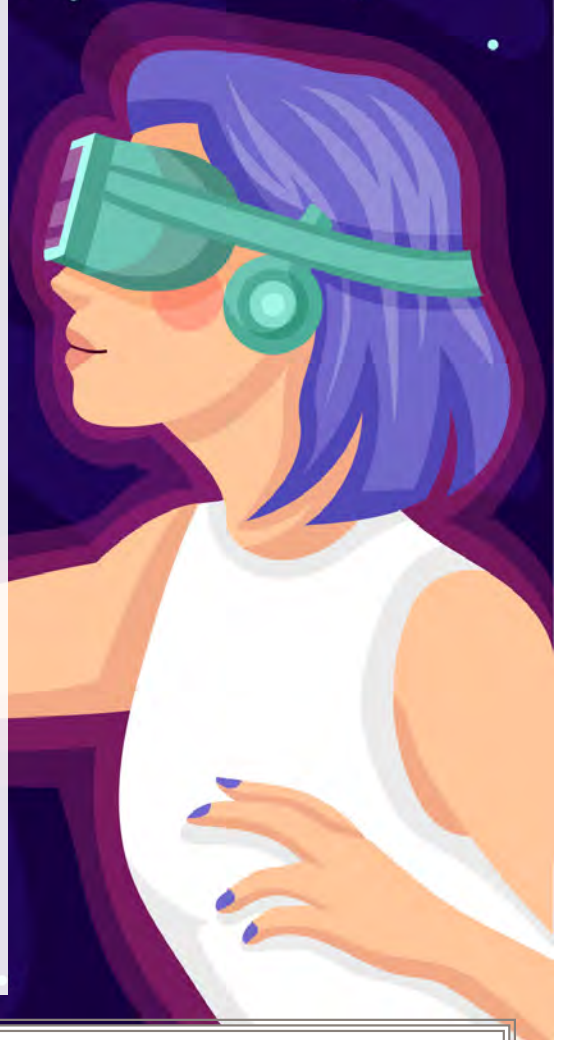
9:00 a.m. – 5:00 p.m.	Registration Open
9:00 a.m. – 12:00 p.m.	KAHCF Board Meeting
1:00 p.m. – 2:30 p.m.	Education Sessions
3:00 p.m. – 4:30 p.m.	Opening General Session
4:30 p.m. – 6:00 p.m.	Decision Makers Reception – KAHCF EXPO

WEDNESDAY—NOVEMBER 15

8:00 a.m. – 9:00 a.m.	KCAL Board Meeting
9:00 a.m. – 5:00 p.m.	Registration Open
8:00 a.m. – 8:30 a.m.	Continental Breakfast
9:00 a.m. – 10:30 a.m.	General Session
10:30 a.m. – 1:00 p.m.	EXPO Open & Lunch
12:00 p.m. – 1:00 p.m.	KCAL Awards Luncheon
1:30 p.m. – 3:00 p.m.	Education Sessions
3:30 p.m. – 4:30 p.m.	Education Sessions
4:30 p.m. – 5:30 p.m.	Meet and Mingle Party

THURSDAY—NOVEMBER 16

9:00 a.m. – 3:00 p.m.	Registration Open
8:00 a.m. – 11:00 a.m.	Continental Breakfast & Resource Exhibits
9:00 a.m. – 10:30 a.m.	GENERAL SESSION
11:00 a.m. – 12:00 p.m.	Education Sessions
2:00 p.m. – 3:00 p.m.	Education Sessions
3:15 p.m. – 4:15 p.m.	Education Sessions
6:00 p.m. – 6:30 p.m.	Awards Reception
6:30 p.m. – 9:00 p.m.	Quality Awards Banquet
9:00 p.m. – 12:00 midnight	Pump the PAC Party



CULL & HAYDEN, P.S.C.

EXPERIENCED • SOLUTION DRIVEN

Surveys/SRIs/Investigations/Certification/MFCU/CHOWS/Self-Disclosures
Executive and Legislative Branch Government Relations

MARIE ALAGIA CULL
MARIAN J. HAYDEN
HOLLY TURNER CURRY

210 WASHINGTON STREET
P.O. BOX 1515
FRANKFORT, KENTUCKY 40602-1515

ATTORNEYS AT LAW
A PROFESSIONAL SERVICES CORPORATION

PHONE: (502) 226-4157
FAX: (502) 226-4158

THIS IS AN ADVERTISEMENT

EVENTS AND EXPO



EXHIBITION SHOW

Tuesday, November 14

Wednesday, November 15

Over 100 of the leading state and national providers of goods and services come together at the largest senior care expo in Kentucky so attendees can learn about the latest developments and recent trends in the profession. It's these vendors who help us reach our goal of quality care and the trade expo is the best place to be to learn more about their services.

Tuesday, November 14

4:30 p.m. – 6:00 p.m.

Corporate & Administrative Kickoff Expo Reception

The first day the expo is open to the corporate and administrator staff only, giving the leaders of departments and management personnel exclusive access to the vendors and their products. Be sure to attend as our vendors can speak with you on a more one-on-one basis.

Wednesday, November 15

10:30 a.m. – 1:00 p.m.

Expo open to ALL attendees

The festivities continue as the expo doors open to all attendees. All convention attendees can register for door prizes, visit with vendors, and enjoy the complimentary lunch.

RESOURCE EXHIBITS

Thursday, November 16

Make sure you attend the Thursday General Session early to check out several non-profit associations, educational and other state organizations that provide resources for long-term care providers.

Continental Breakfast

Enjoy a complimentary breakfast before the morning sessions on Wednesday and Thursday!



MEET AND MINGLE PARTY

Wednesday, November 15

4:30 p.m. – 5:30 p.m.

Mingle with your colleagues in a relaxed setting before dinner. Meet everyone in the east side lobby on the first floor. We'll be drawing the winner for the expo door prize as well.

Sponsored by Medicare Pharmacy, HPSI, Stites & Harbison, Cull & Hayden, Pharmerica, Synchrony Health Services, Remedi SeniorCare Pharmacy and HTS.

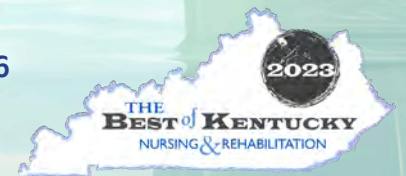


CELEBRATION AT THE QUALITY AWARDS BANQUET

Thursday, November 16

Banquet Reception

6:00 p.m. – 6:30 p.m.



KAHCF Quality Awards Banquet

6:30 p.m. – 10:00 p.m.

Join us for a very special evening where we recognize Kentucky's top caregivers and facilities at the Quality Awards Banquet. The Best of Kentucky – Nursing and Rehabilitation Awards will be recognized for their superior service in the state. We promise you won't be bored!

Sponsored by HPSI, Med Care Pharmacy

KCAL DAY WEDNESDAY, NOV. 15

We are excited to present a day dedicated to our Assisted Living and Personal Care Communities. Learn more about how KCAL and the National Center for Assisted Living can help you provide quality care while also networking with your peers.

KCAL Day Schedule:

8:00 a.m. – 9:00 a.m. Registration & Continental Breakfast

Come early to check in at registration and get prepared for the day.



9:00 a.m. – 10:30 a.m.

In this Together: Becoming a Team of Retention Champions

Presenter: Shelonda Darling
Workforce Retention Strategist
Magnet Culture

Champion Sponsors: Cull & Hayden, P.S.C. and Kentucky Healthcare Foundation

10:30 a.m. – 11:30 a.m. KAHCF/KCAL Expo open

12:00 p.m. – 1:00 p.m. KCAL Awards Luncheon

1:30 p.m. – 3:00 p.m.

Feel free to attend any of the educational offerings
AL/PC designated education will be labeled

3:30 p.m. – 4:30 pm

Feel free to attend any of the educational offerings
AL/PC designated education will be labeled

4:30 p.m. – 5:30 p.m.

Meet and Mingle Reception



Experience and knowledge are the best medicine.

You deserve legal counsel that has the experience, understanding and agility to help you successfully navigate challenging situations. Stites & Harbison has the health care attorneys capable of handling your most complex matters.

Learn more at stites.com.

STITES & HARBISON PLLC
ATTORNEYS

KENTUCKY • INDIANA • OHIO • TENNESSEE • GEORGIA • VIRGINIA

EDUCATION

TUESDAY, NOVEMBER 14

1:00 p.m. – 2:30 p.m.

Session 1 – Artificial Intelligence how it is Impacting Health Care

During this session we will review value-based care and tools that can be utilized to help both operations and clinical team manage their data. The speaker will review examples of artificial intelligence tools available today. Artificial intelligence will continue to grow and understanding its impact on Health Care will be very important in the future

*Presenter: Rhonda Dempsey
SVP Chief Nursing Officer
Trilogy Health Services, LLC
Louisville, KY*

Session 2 – Panel discussion on Past Non-Compliance

Surveyors may cite Past Noncompliance when a facility corrects a situation involving noncompliance before the survey begins. CMS does not require a facility to provide a plan of correction for a deficiency cited as past noncompliance because that deficiency is corrected at the time it is cited; however, the survey team must document the facility's corrective actions on Form CMS-2567. This session will address Past Noncompliance: required elements, operational examples, and a surveyor perspective.

*Panel: Marian Hayden, Attorney with Cull & Hayden
Conjuna Collier, Sr Vice President of Risk Management of Masonic Homes of Kentucky
Adam Mather, Office of the Inspector General
Moderator: Lisa Biddle-Puffer, Director of Quality and Regulatory Affairs
KAHCF/KCAL*

Session 3 – New Directions in the Treatments of Behavioral and Psychological Symptoms of Dementia (BPSD)

This session will discuss how the current traditional psychiatric/psychological treatment approaches for Dementia residents in Nursing Homes and Memory Care Units are obsolete in light of research from the last 15-20 years. We will present a neurology forward approach that addresses the root cause - brain disease. This allows for proper diagnoses, psychological assessment/treatment, and pharmacological treatment. The new paradigm is interdisciplinary, driven by neurology, then supported with psychiatry and psychology, and maintained via high frequency visits to get ahead of declines/changes. Residents have improved clinical outcomes and quality of life with decreased severity and frequency of BPSD, which lowers the reliance on antipsychotics and can reduce polypharmacy.

Sponsored by: GuideStar Eldercare

*Presenter: Dr. Daniel Heiser
Sr. VP of Behavioral Health
GuideStar Eldercare
Crown Point, IN*



 **Session 4 – Tech Advancements for Senior Technology**
Learn and engage with virtual reality for therapy and exploration, explore wearable technologies on the market today and learn about smart home technologies to stay safe in their communities. There will also be several demos and product drawings/giveaways for attendees.

*Presenters: Sheri Rose
CEO
Thrive Center
Louisville, KY*

Session 5 – Now Hiring! Recruitment Overhaul Case Study

Attracting good employees to your organization is vital. Operators must leverage the similar marketing principles that drive census to leverage for recruitment marketing. During this session, we will discuss the driving behaviors and challenges of recruiting while diving into the importance of creating a successful strategic marketing plans solely focused on recruitment. Creating a strong value proposition while successfully displaying your strong brand across a multi-channel marketing is key. We will also discuss recruitment best practices, onboarding and realistic execution for even the most lean teams.

Sponsored by: Healthcare Therapy Services

*Presenter: Amanda Green
Executive Vice President Marketing & Strategy
Greenwood, IN*

Opening General Session

3:00 p.m. – 4:30 p.m.

Session 6 – Facing the Future with Excellence

This will be an unforgettable journey through powerful stories and action based strategies that will transform the culture of your team.

The audience will leave with:

- Key strategies in building an intentional, trusting and accountable team culture
 - Practical steps to service excellence
 - The how to's in navigating change
 - Tools to pursue unity
 - Inspiration to constantly grow and make a difference
- Based on a real life situation, which Randy has shared for years with thousands of people, this keynote is truly transformational. If you want to raise the standard, be intentional about culture and have a team that serves at the highest levels, this presentation experience is for you.

Sponsored by: HPSI & MedCare Pharmacy

*Presenter: Randy Fox, Author, Coach
FoxPoint Transformational Leadership
Orlando, FL*



EDUCATION

WEDNESDAY, NOVEMBER 15

Second General Session

9:00 a.m. – 10:30 a.m.

Session 7 – In This Together: Becoming a Team of Retention Champions



When employee turnover seems never-ending, it negatively affects everyone on staff and keeps organizations from building cohesive teams. As many teams remain consistently understaffed, it becomes vital that everyone plays a part in improving team retention. Doing so means less stress and more restful sleep at night for all!

In this engaging keynote, Magnet Culture’s Retention Strategist Shelonda Darling will energize and empower your entire team to reduce “us vs. them” team conflicts at work. Participants will leave this powerful session with a renewed sense of commitment to the organization and ownership in the retention solution. Our people are our greatest retention advocates, so let’s all attract others onto our teams, instead of repelling the talent we can’t afford to lose.

Champion Sponsors: Cull & Hayden, P.S.C & Kentucky Healthcare Foundation

Presenter: Shelonda Darling
Workforce Retention Strategist
Magnet Culture
Jeffersonville, IN



CULL & HAYDEN, P.S.C.



1:30 p.m. – 3:00 p.m.

Session 8 – From Surviving to Thriving: Interactive Discussions on Profitability and Cash Flow in an Everchanging Environment

When employee turnover seems never-ending, it negatively Join us for dynamic discussions on operational challenges facing today’s Skilled Nursing Facilities. Topics will include cash flow, reimbursement, characteristics of a successful Skilling Nursing Facility, communication, and best practices.

Sponsored by: Hargis & Associates, Inc.

Panel Members:

Sarah McIntosh, President
Rhonda Houchens, Director of Operations
Kyle Fritsch, Director of Revenue Management
Hargis & Associates, Inc.
Russellville, KY

Educational Tracks

 Leadership

 Clinical

 Quality of Life

 Marketing/
Communications

 Regulatory

 KCAL
(only on Wednesday)



Session 9 – Current Survey and Enforcement Actions

This session will focus on best practices related to surveys and exit interviews as well as when and how to appeal citations. The presenters will provide detailed information regarding how to best navigate the appeal process.

Sponsored by: Steptoe & Johnson, PLLC.

Presenters: Aleah Schutze, Of Counsel
Kristen Wilson, Member
Steptoe & Johnson, PLLC.
Louisville, KY



Session 10 – Leveraging Your Dining Program to Build Back Census

There’s a new generation on the horizon as the next pipeline for building census, and your senior living community has never seen anything like them! Join us in discussing the ways that leveraging and updating your Dining program draws in new Baby Boomer residents, excites family members who are shopping for their loved one’s next home, and delights current residents who are itching for new, fresh ideas. We’ll discuss menu renovations, dining room renovations, AI innovations to relieve staff burden, and marketing techniques to show off your incredible Dining program to prospective residents.

Sponsored by: Incite Strategic Partners.

Presenter: Jen Bruning, MS, RDN, LDN
Director of Nutrition & Brand Innovation
Incite Strategic Partners
Oak Park, IL



Session 11 – Assisted Living Regulation Overview

The new regulation will require assisted living communities to seek licensure to either continue as a social model ALC, or to add basic health and health-related services which may include dementia care. This session will address significant changes in the regulation and how this will impact assisted living operations.

Presenter: Lisa Biddle-Puffer

Director of Quality and Regulatory
Kentucky Association of Health Care/Kentucky Center for Assisted Living
Louisville, KY



Session 12 – Building a Stronger Sales Pipeline: The 5 W’s of Outreach

In senior living, sales leads that come from professional referral sources and word-of-mouth are 7 times more likely to convert to move-ins than leads from paid aggregators, yet our industry continues to rely on this costly option. In this session, we will look at strategies and action steps that will help you successfully move away from relying on paid lead sources. We’ll also help you create a plan for developing your network of referral sources to strengthen your sales pipeline. The session is presented with opportunities for participation, sharing ideas and solutions.

Presenter: Julie Podewitz

CEO & Founder
Grow Your Occupancy
Brentwood, TN

EDUCATION

WEDNESDAY, NOVEMBER 15

3:30 p.m. – 4:30 p.m.

Session 13 – Back to the Basics: Medicaid Application Process and Eligibility

This seminar will include a presentation of the standard Medicaid application process, eligibility requirements including MAGI Medicaid, common issues experienced, followed by an opportunity for question and answers.

*Presenter: Justin Shaw
Branch Manager, Medical Support and Benefits Branch
Department of Community Based Services
Frankfort, KY*

Session 14 – Root Cause Analysis: A Deeper Dive

Participants will be given root cause analysis tools, including the 5 Whys and Fishbone Diagram. Detailed discussion provided on each of the tools, when and how to use the tools, and follow up post investigation occurrence that elicited onset root cause analysis. Participants Q&A session, as well as resources to be used in follow up from the presentation.

Sponsored by: Alliant Health Solutions

*Presenter: Katie Pass
Kentucky State Quality Manager
Alliant Health Solutions
Louisville, KY*

Session 15 – The Impact of Nutrition on Mental Health in Residents

Mental health among senior living residents has long been a topic of interest, never more than while navigating the isolation, stress and boredom brought on by the COVID-19 pandemic. This session will discuss the role that nutrition can play in maintaining or improving the mental health status of older adults via the gut-brain axis, nutrient abundance and enjoyment of meals. Attendees will engage in round-table discussion of current practices supporting mental health and be able to state one takeaway idea for implementation following the event.

Sponsored by: Incite Strategic Partners

*Presenter: Jen Bruning, MS, RDN, LDN
Director of Nutrition & Brand Innovation
Incite Strategic Partners
Oak Park, IL*

Session 16 – Medical Cannabis and Long Term Care - Considerations for Providers

The presenter will provide a brief summary of federal cannabis laws and then present on the medical cannabis program currently being developed in the Commonwealth. The presenter will discuss various policy approaches to medical cannabis that long term care facilities can adopt. Specific examples of facility policies currently in use will be examined. Will also identify potential issues around allowing the use of medical cannabis in a long term care setting and discuss best practices. This presentation will contain practical advice for providers and will encourage questions and audience discussion and participation..

Sponsored by: Steptoe & Johnson, PLLC

*Presenter: Aleah Schutz, Of Counsel
Steptoe & Johnson, PLLC
Louisville, KY*

Session 17 – Solving the Occupancy Puzzle – You've Got the Leads, Now What?

This session will identify the three sales conversions that have the greatest impact on sales results, what to do to improve each conversion, and we will also dive into two case studies (senior living providers in California) that show the impact of narrowing in on skill sets to improve sales conversions has on your bottom line.

*Presenter: Julie Podewitz
CEO & Founder
Grow Your Occupancy
Brentwood, TN*

SUPPORTING
OUR PARTNERS



**BEYOND
THERAPY**
HTS
your partner
in therapy™

TAKE YOUR
THERAPY TO THE
NEXT LEVEL

**Schedule a Rehab
Analysis Today!**

Contact:
AMANDA GREEN
Executive VP
Marketing & Strategy
317-523-7358
amanda@htstherapy.com

Healthcare Therapy Services, Inc. | www.htstherapy.com



PHARMACY INNOVATION THAT HAS REVOLUTIONIZED THE MEDICATION PASS



Save 30 minutes per nurse per med pass



Improve clinical outcomes



Lower risk of infection



Reduce overall pharmacy spend



VISIT BOOTH 65 TO MEET PAXIT®

EDUCATION

THURSDAY, NOVEMBER 16

Third General Session

9:00 a.m. – 10:30 a.m.

Session 18 – The Companionship Culture: Resident/Caregiver Engagement Through Life Stories

Today's operational and clinical leaders navigate "white flag" moments daily. Responsibilities include quality outcomes, operational excellence, and staff development within a highly regulated industry, which may influence burnout as a healthcare professional.



Isolation within the elder community is rising and with detrimental consequences. This trend is a reality for many residing within a healthcare community and frequently starts with physical separation before admission. The worldwide CORONA pandemic has compounded realities for the senior healthcare community. An epidemic that has scrutinized yet galvanized the industry and required professional and personal sacrifice.

This motivational message designed to recognize and honor healthcare professionals for their contribution during this worldwide pandemic. Moreover, it influences a cultural movement to reduce isolation to improve person-centered care.

Presenter: Jerald Cosey, BA, HFA, C.N.A
Healthcare Speaker

Champion Sponsor: Remedi SeniorCare Pharmacy



11:00 a.m. – 12:00 p.m.



Session 19 – Kentucky Reimbursement Update

Attend this education session to learn more on the current state of reimbursement, the upcoming transition of Medicaid Rates to the Patient Driven Payment Model (PDPM), and the rebasing of Medicaid rates that will occur in Kentucky on July 1, 2024.

Presenter: Steve Bechtel
Chief Financial Officer/ Division Director
Commonwealth of Kentucky
Department for Medicaid Services
Frankfort, KY

Presenter: Beth Collier Vail
Senior Manager
Myers and Stauffer LC
Frankfort, KY



Session 20 – Life Safety Code Happens-Documenting for Success

CMS adopted both the 2012 Life Safety and Healthcare Facilities Code more than a 7-years ago establishing many new expectations for inspection, testing and maintenance (ITM). With this comprehensive adoption there has been an evident tightening of the requirements by CMS through stricter implementation resulting in many more deficiencies. Using real life examples and survey scenarios, the session will explore how the code is applied; discuss code changes and increased ITM requirements; and review common violations. Understand practical applications of the Life Safety Code and learn from Life Safety expert on what to prepare for during survey. This session will examine what CMS expects and an overview of documentation for survey success

Presenter: Kenneth Daily, LNHA
President
Elder Care Systems Group
Dayton, OH



Session 21 – Best Practices and Innovation in the Dementia Care World

This session will provide an overview on concepts, resources, technology that are available to us today.

Presenter: Rachelle Blough, CTRS
Certified Alzheimer's Disease and dementia care trainer
National Council for Certified dementia practitioners
Chicago, IL



Session 22 – A Facility Assessment Approach to Behavioral Health & the COE-NF

Discover a practical approach to conducting a nursing facility behavioral health needs assessment. Learn to systematically identify the behavioral health demographics and needs of a facility's resident population and a method for evaluating a facility's current behavioral health services. Explore the range of behavioral health services and support that can be offered in and out of a facility to increase capacity to meet the behavioral health needs of residents. Additionally, learn about the new Center of Excellence for Behavioral Health in Nursing Facilities (COE-NF), what services they offer, and how to access them.

Presenter: Jeremy Bischoff, LNHA
Program Director
Center of Excellence for Behavioral Health in Nursing Facilities (COE_NF)
Louisville, KY

Educational Tracks



Leadership



Clinical



Quality of Life



Marketing/
Communications



Regulatory



KCAL
(only on Wednesday)

EDUCATION

THURSDAY, NOVEMBER 16



Session 23 – Reducing Medications and Resident Risk: Enhancing Staff Awareness

Medications are used to treat disease and extend life but can subsequently result in multiple medications being prescribed in patients with complex chronic health conditions and advanced age. The use of multiple medications referred to as polypharmacy, is linked to drug therapy-related issues such as interactions, drug toxicity, falls with injury, delirium, and non-adherence. These issues compound leading to higher costs of care for the patient and the health care system. The goal of this presentation is to review polypharmacy-related issues in the long-term care facilities, identify opportunities for deprescribing as it relates to certain drugs or drug classes, discuss how to engage LTC staff in deprescribing efforts, and review existing deprescribing resources available to the long-term care community. Additionally, there will be an opportunity for audience participation to share barriers and best practices that have worked for individual facilities.

Presenter(s):

Muhammad Babar, MD & PhD

Reyna VanGilder, PharmD

Kentucky Department for Medicaid Services
Frankfort, KY

2:00 p.m. – 3:00 p.m.



Session 24 – Suits. (Not The TV Show). What To Do.

This presentation will explain the steps of the litigation process and common risk management areas that can give rise to lawsuits. They will explain the discovery process, such as what employees can expect when they are asked to give a deposition. In addition, they will discuss the state of developing law related to Kentucky's COVID-19 immunity statute, and when immunity may or may not apply to relieve a facility of liability. What to do when physical or sexual abuse by employees is reported will also be addressed, as well as the various strategies to defend claims of understaffing.

Sponsored by: Stites & Harbinson, PLLC

Presenters: Matthew W. Breetz, Member

Jennifer Henry Jackson, Attorney

Stites & Harbinson, PLLC
Louisville, KY



Session 25 – Crisis & Disaster Management-CMS Emergency Preparedness Requirements

CMS expects long term care facilities to be prepared for emergencies with a set of comprehensive regulations, “Medicare and Medicaid Programs; Emergency Preparedness Requirements for Medicare and Medicaid Participating Providers and Suppliers” which is outlined in Appendix Z . The guidance adds significant expectations relating to Emerging Infectious Disease outbreaks, evacuation and shelter-in-place, use of emergency generators, alternate care sites, facility risk assessment and training and exercise regime. This program will explore the CMS requirements and guidance to surveyors (Appendix Z) including a recommended policies and templates to meeting the comprehensive standards. Facility leadership is critical in developing and deploying effective and innovative multi-disciplinary disaster response to ensure reducing losses, protecting lives and a quicker recovery.

Presenter: Kenneth Daily, LNHA

President

Elder Care Systems Group

Dayton, OH



Session 26 – Creating quality calendars... tips for generating new ideas...

This session will review all of the various ways, resources to create quality well rounded calendars to embrace all of our residents.

Presenter: Rachelle Blough, CTRS

Certified Alzheimer's Disease and dementia care trainer

National Council for Certified dementia practitioners

Chicago, IL



Session 27 – Transforming Nursing Home Care Through Compassionate Care Training

The complexity of Alzheimer's Disease and Related Dementias (ADRD) requires that nursing home care goes beyond traditional measures. Compassionate Caregiving (CC) is an approach that recognizes the emotional needs of residents, not just their physical health. CC training equips nursing home administrators and direct support staff with the skills needed to foster genuine connections with residents, ensuring that they are treated with dignity and compassion. It includes active listening skills, how to manage challenging behaviors, and stresses the importance of staff self-care. With CC, residents experience an enhanced quality of life and caregivers find job satisfaction. Our discussion will culminate in a panel that provides an overview of our innovative CC care model, aimed at revolutionizing nursing home care for all residents, especially those with ADRD. This panel will comprise our accomplished CC team, along with CNAs and nursing home administrators who have actively participated in our transformative program.

Presenter(s): Sam Cotton, MSSW, PhD,

Assistant Professor

Department of Family and Geriatric Medicine

University of Louisville School of Medicine

Justin Magnuson

Program Manager

University of Louisville Trager Institute

Louisville, KY



Synchrony™
PLATINUM

Three lines of business.
One solution.



Contact Dean DeMartino at **615.674.0035** or
dean.demartino@synchronyhs.com

EDUCATION

THURSDAY, NOVEMBER 16



Session 28 – Community Outreach Strategies

Will discuss community outreach strategies and how to implement and empower team members to meet the needs of the customer; provide leadership with simple and effective ways to consistently recognize and communicate with referral partners and team members; and the tools that will help continue to meet the needs of customers now and in the future.

Sponsored by: CHR Consulting Services, Inc.

*Presenter: Tricia Whaley
Senior Director of Provider Relations
CHR Consulting Services, Inc.
Dresher, PA*

3:15 p.m. – 4:15 p.m.



Session 29 – Water Management Plans/ Legionella

CMS issued revised Surveyor Guidance for Infection Control and included water management plans and Legionella control. Coupled with the expectations previously issued with Survey and Certification Memo 17-30 (and updated it 2018) stating that healthcare facilities must develop and adhere to a water management program. Healthcare facilities have complex water systems that may promote growth of pathogenic organisms if not properly maintained. Legionnaires' disease is a serious, potentially deadly form of bacterial pneumonia. The primary sources of infection are Legionella-contaminated water from showers, faucets, cooling towers, and decorative water features such as fountains or water walls. For this reason, the CMS feels that it is essential that nursing homes have a water management program that is effective in limiting Legionella and other opportunistic pathogens of premise plumbing from growing and spreading in their facility. This session will focus on nursing facility's responsibility for water management and assessing and controlling Legionnaires' disease. Facilities must document its approaches to preventing outbreaks and CMS requires facilities to have water management plan.

Presenter: Kenneth Daily, LNHA

*President
Elder Care Systems Group
Dayton, OH*



Session 30 – All Hands-On Deck Involving All Staff in Activities

This session will provide practical ideas and ways to involve all staff in the activities for the residents in realistic ways

*Presenter: Rachelle Blough, CTRS
Certified Alzheimer's Disease and dementia care trainer
National Council for Certified dementia practitioners
Chicago, IL*



Session 31 – Fall Respiratory Vaccination

An overview of the vaccines available this fall session will be shared. This presentation will involve scenarios demonstrating how to have the trusted conversation with patients/families on the importance of receiving these vaccines.

*Presenter: Amy Herrington
Clinical Team Manager
Kentucky Department of Public Health
Frankfort, KY*



Session 32 – The Digital Marketing Forecast

The digital marketing landscape continues to shift and change far more rapidly than any other essential business function. Is your digital marketing what it needs to be? This session will cover the groundwork you will need to set a foundation for your digital presence. We'll cover a lot of ground - from websites to social media to digital advertising. And, if you are part of a small team (even a team of one), the takeaways will be simple enough to weave into your current workflow.

*Presenter: Jared Powers
Director of Digital Strategy
CHR Consulting Services, Inc.
Dresher, PA*



DZENITIS NEWMAN PLLC

Attorneys at Law

READY TO DEFEND

PASSIONATE. EFFICIENT. EFFECTIVE.
DEDICATED TO THE DEFENSE OF HEALTHCARE PROVIDERS.

dznlaw.com ~ (502)641-8485 ~ info@dznlaw.com

PharMerica
Delivering Value
Beyond Medication

PharMerica delivers **world-class pharmacy services** to our partners in a broad array of healthcare markets including long-term care, senior living, hospice, IDD/behavioral health, home infusion, specialty, and hospital management.

Find out more at PharMerica.com

Educational Tracks



Leadership



Clinical



Quality of Life



Marketing/
Communications



Regulatory



KCAL
(only on Wednesday)



REGISTRATION FOR 2023 ANNUAL MEETING

REGISTRATION FEES

Please note that we have **NEW** Individual or Group Registration Rates this year. Three or more attendees from the same facility or corporate office will qualify for the Group Rate.

Quality Awards Banquet Tickets are sold separately from Registration.

A late fee of \$200 per Facility or Corporate Office will be assessed for registrations received after the deadline of October 29th.

The KCAL Day rate is **only** for Assisted Living & Personal Care Facilities (includes lunch)

<i>KAHCF Member</i>	<i>On/Before October 29</i>	REGISTER FOR THE ANNUAL MEETING ON OUR WEBSITE! 1. Visit kahcfkcal.org 2. Click “sign-in” on the top right corner on the homepage. 3. Sign in using your email address as your username and password. If you do not have one, email kbass@kahcf.org to add you to the system. 4. Click Events/Annual Meeting. 5. Click “Register Myself” and wait for the page to refresh. 6. If registering others from your facility, click “register someone else.” 7. Enter the contact information if they are not in our database. If they are, simply find their name in the quick search box.
Individual Rate for one to two registrations from same Facility or Corporate office	\$275/per person	
Group rate of 3-6 attendees from same Facility or Corporate office	\$885	
Each additional registration over six attendees from the same Facility or Corporate office	\$100 per person	
Quality Awards Banquet	\$ 75/per person	
<i>Non-Member Rate</i>	\$550 per person	
<i>KCAL Member Day-Wednesday</i>		
Individual Rate	\$99/per person	
<i>NON-KCAL Member Day-Wednesday</i>		
Individual Rate	\$200/per person	

THE REGISTRATION FEE INCLUDES:

The registration fee includes More than 11 CEU hours of educational workshops and general sessions, conference materials, entry to the trade show, silent auction, two continental breakfasts, meet and mingle reception, and lunch on Wednesday. Attendance at the educational breakout sessions is limited to room capacity.

CONVENTION INFORMATION



The **GALT HOUSE**

Legendary • HOTEL • Louisville

The Galt House Hotel & Suites
140 North Fourth Street
Louisville, KY 40202
502-589-5200

www.galthouse.com

Galt House Hotel Website: Click [here](#) to
make hotel reservation

The reservation code for phone calls: 1113HCF
Phone number for call – 800-843-4258

The Galt House Hotel & Suites has made the following rates available for our convention:

Galt House West Rivue Tower

\$169.00 Single/Double
\$169.00 Triple
\$169.00 Quad

Galt House East Executive Suite Tower

\$199.00 Single/ Double
\$199.00 Triple
\$199.00 Quad

Deadline to reserve your hotel room is October 29, 2023.

To make reservations online, go to www.kahcfkcal.org and click on the Annual Meeting logo on the home page or go to the Calendar and click on Annual Meeting. A link is provided to make hotel reservations. If you contact the hotel directly, be sure to indicate you are attending the KAHCF convention for the convention rate. All reservations received after this cut-off date will be accepted, based on availability. Rates will be subject to all states city taxes and fees effect at the time of the event.

Please make every effort to stay at the host hotel. To keep our event costs as low as possible, we rely on meeting our room block commitments with the Galt House Hotel.

REGISTRATION CHANGES

Changes to your registration prior to convention must be made through the KAHCF website by logging into your account. Changes will be accepted through November 9 on the website, after which all changes will be made on-site.

NAME BADGES

Name badges must be worn to enter all educational seminars and the trade show. Your name badge will contain your name, title, facility, the seminar number(s) for which you are registered.

WHAT SHOULD I WEAR?

Business casual is encouraged for all the educational programs. Professional attire is appropriate for the awards banquet. This is an evening of recognition and celebration. Participants are encouraged to bring a light jacket or sweater or to dress in layers to accommodate varying room temperatures.



REGISTRATION POLICIES

- An individual must be registered for convention in order to attend any educational seminars at a convention.
- Name badges will indicate the seminars for which the participant has registered.
- All room set-ups will be made for maximum capacity allowable by law.
- Tickets for special convention functions may be purchased by facilities not registered for convention.

CONTINUING EDUCATION UNIT (CEU)

- Total CEUs that are attainable – 11.00
- The number of hours participants will receive will be based on sessions attended.
- KAHCF is an approved provider of continuing education for the Kentucky Board of Licensure for Nursing Homes Administrators and Kentucky Board of Nursing. To receive continuing education credit, you must complete the entire program. Certificates may be printed once the program evaluation is submitted. Disclaimer Statement: The Kentucky Board of Nursing approval of an individual continuing education provider does not constitute endorsement of program content.
- All other disciplines are encouraged to keep track of their attendance hours and submit them for CE credit to the appropriate agency for their discipline.
- KAHCF observes the current licensure requirements of individual professional boards.

www.kahcfkcal.org

Follow us on Social Media:



KAHCF IS USING QR CODE TO VERIFY ATTENDANCE OF SEMINARS:

New this year! We are using a unique QR Code for each session to confirm attendance and to complete the session evaluation for each seminar.

- Where to find the QR Code? Displayed on the registration table when you exit the seminar room.
- To receive full credit for attending each session, you are required to complete within 24 hours of each educational session
- Please note that you will be required to enter your KBN license number.

SESSION HANDOUTS

KAHCF does not print session handouts for participants. The handouts for sessions will be posted on KAHCF's website two weeks prior to the event. Password information to download handouts will be sent out when the handouts are posted.

KAHCF CANCELLATION POLICY

Registration Fee: Cancellations received seven (7) workdays prior to the seminar date will receive a full refund for the registration. Cancellations received inside of seven (7) workdays will receive one-half refund. Participants who do not attend will not receive a refund unless prior written notice is given to the KAHCF office. All cancellations must be made in writing and sent via email: aporter@kahcf.org

Banquet Ticket refund: Cancellations received seven (7) workdays prior to the banquet date will receive a full refund for the banquet ticket. Cancellations received four days prior to the banquet date will not receive a refund. All cancellations must be made in writing and may be emailed. Phone cancellations will not be accepted.



**Professionally serving Kentucky
Association Healthcare members with a
proud reputation of reliability,
value and innovation.**

Service | Integrity | Quality | Trust



1-800-231-9070

Louisville, Northern Kentucky, Glasgow, Ashland